

SDCBP antibody - middle region
Rabbit Polyclonal Antibody
Catalog # AI12442**Specification**

SDCBP antibody - middle region - Product Information

Application	WB, IHC
Primary Accession	O00560
Other Accession	NM_001007067 , NP_001007068
Reactivity	Human, Mouse, Rat, Rabbit, Zebrafish, Pig, Horse, Bovine, Guinea Pig, Dog
Predicted	Human, Mouse, Rabbit, Zebrafish, Pig, Chicken, Horse, Dog
Host	Rabbit
Clonality	Polyclonal
Calculated MW	32kDa kDa

SDCBP antibody - middle region - Additional Information**Gene ID** 6386**Alias Symbol** MDA-9, ST1, SYCL, TACIP18**Other Names**

Syntenin-1, Melanoma differentiation-associated protein 9, MDA-9, Pro-TGF-alpha cytoplasmic domain-interacting protein 18, TACIP18, Scaffold protein Pbp1, Syndecan-binding protein 1, SDCBP, MDA9, SYCL

Format

Liquid. Purified antibody supplied in 1x PBS buffer with 0.09% (w/v) sodium azide and 2% sucrose.

Reconstitution & Storage

Add 100 ul of distilled water. Final anti-SDCBP antibody concentration is 1 mg/ml in PBS buffer with 2% sucrose. For longer periods of storage, store at 20°C. Avoid repeat freeze-thaw cycles.

Precautions

SDCBP antibody - middle region is for research use only and not for use in diagnostic or therapeutic procedures.

SDCBP antibody - middle region - Protein Information**Name** SDCBP**Synonyms** MDA9, SYCL**Function**

Multifunctional adapter protein involved in diverse array of functions including trafficking of transmembrane proteins, neuro and immunomodulation, exosome biogenesis, and tumorigenesis (PubMed:26291527).

Positively regulates TGFB1-mediated SMAD2/3 activation and TGFB1-induced epithelial-to-mesenchymal transition (EMT) and cell migration in various cell types. May increase TGFB1 signaling by enhancing cell-surface expression of TGFR1 by preventing the interaction between TGFR1 and CAV1 and subsequent CAV1-dependent internalization and degradation of TGFR1 (PubMed:25893292). In concert with SDC1/4 and PDCD6IP, regulates exosome biogenesis (PubMed:22660413). Regulates migration, growth, proliferation, and cell cycle progression in a variety of cancer types (PubMed:26539120). In adherens junctions may function to couple syndecans to cytoskeletal proteins or signaling components. Seems to couple transcription factor SOX4 to the IL-5 receptor (IL5RA) (PubMed:11498591). May also play a role in vesicular trafficking (PubMed:11179419). Seems to be required for the targeting of TGFA to the cell surface in the early secretory pathway (PubMed:10230395).

Cellular Location

Cell junction, focal adhesion. Cell junction, adherens junction. Cell membrane; Peripheral membrane protein. Endoplasmic reticulum membrane; Peripheral membrane protein. Nucleus. Melanosome. Cytoplasm, cytosol. Cytoplasm, cytoskeleton. Secreted, extracellular exosome. Membrane raft. Note=Mainly membrane-associated Localized to adherens junctions, focal adhesions and endoplasmic reticulum. Colocalized with actin stress fibers. Also found in the nucleus. Identified by mass spectrometry in melanosome fractions from stage I to stage IV. Associated to the plasma membrane in the presence of FZD7 and phosphatidylinositol 4,5-bisphosphate (PIP2) (PubMed:27386966).

Tissue Location

Expressed in lung cancers, including adenocarcinoma, squamous cell carcinoma and small-cell carcinoma (at protein level) (PubMed:25893292). Widely expressed. Expressed in fetal kidney, liver, lung and brain. In adult highest expression in heart and placenta.

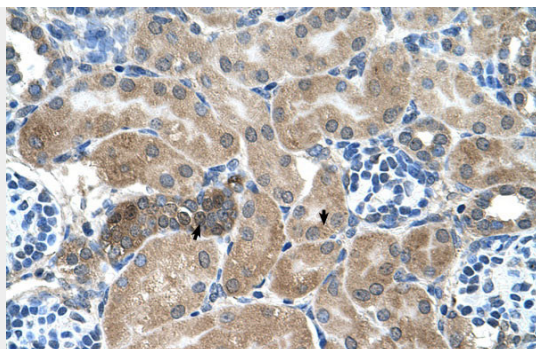
SDCBP antibody - middle region - Protocols

Provided below are standard protocols that you may find useful for product applications.

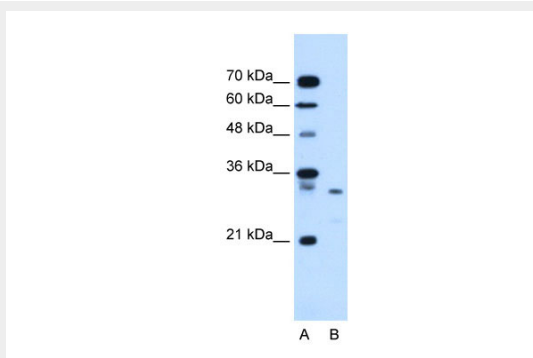
- [Western Blot](#)
- [Blocking Peptides](#)
- [Dot Blot](#)
- [Immunohistochemistry](#)
- [Immunofluorescence](#)
- [Immunoprecipitation](#)
- [Flow Cytometry](#)
- [Cell Culture](#)

SDCBP antibody - middle region - Images





Human kidney



WB Suggested Anti-SDCBP Antibody Titration: 1.25µg/ml
Positive Control: HepG2 cell lysate

SDCBP antibody - middle region - References

Boukerche, H., (2005) Cancer Res. 65(23), 10901-10911 Reconstitution and Storage: For short term use, store at 2-8°C up to 1 week. For long term storage, store at -20°C in small aliquots to prevent freeze-thaw cycles.